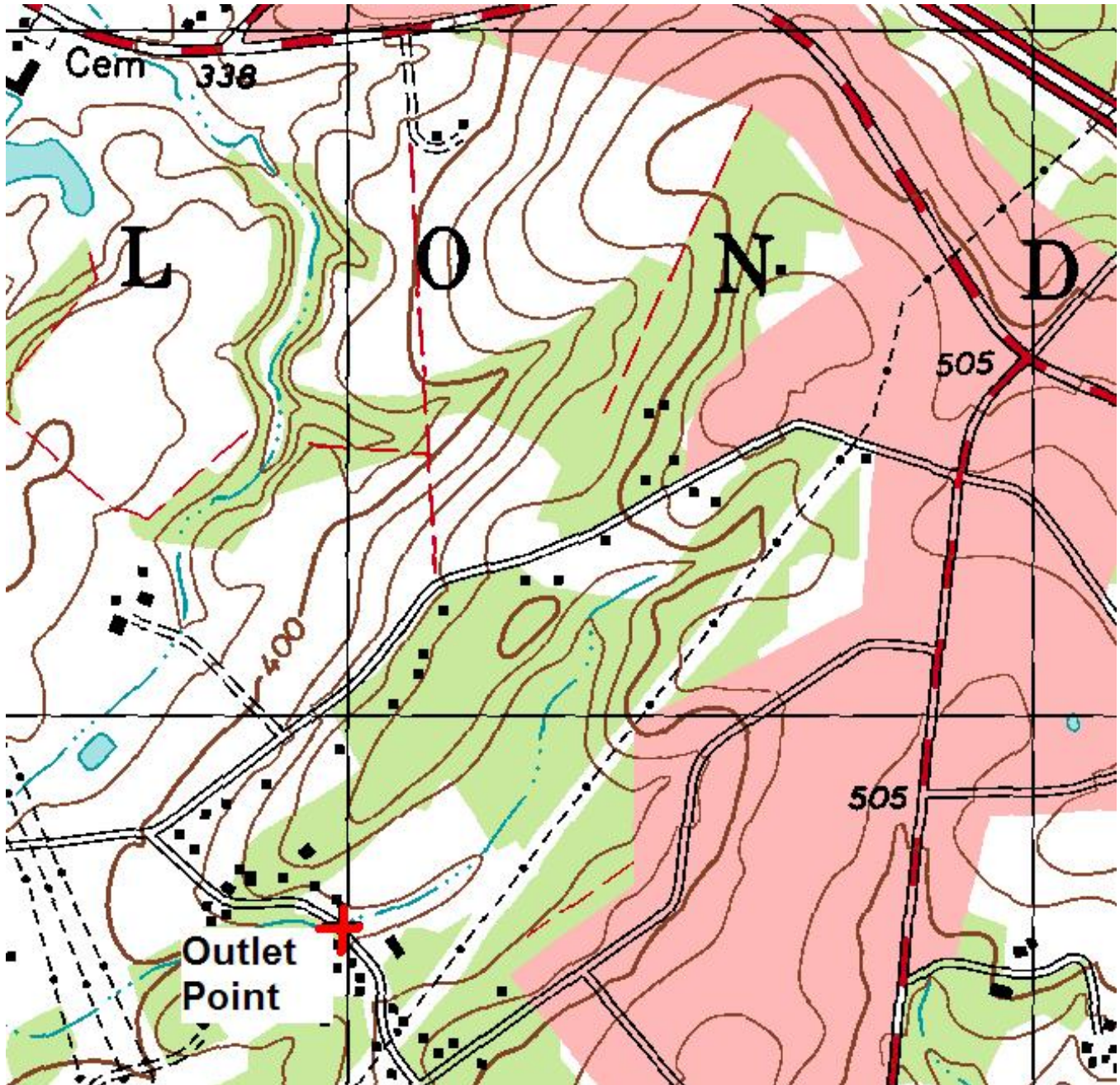


### Module 3 Rains and Hydrology Assignment

- 1) Determine the watershed delineation above the cross on the attached map (hint: it goes off the map very slightly on the bottom edge).
- 2) Calculate the peak runoff rate for the 25 year storm (Birmingham area), assuming B soils, and good wood cover (make other reasonable assumptions as needed).
- 3) Conduct a similar watershed analysis for the watershed containing your construction site (subdividing the area into upstream, on-site, and downstream areas).



0 0.2 0.4 0.6 0.8 1 mi

Note: 20 ft contour intervals